

## COVID-RELATED HEALTH PROTOCOLS - From June 30, 2021

### POOL PROTOCOL

- Wearing a mask is compulsory on swimming pool decks and when traveling
- Mandatory hand washing before entering the aquatic areas
- Scrupulously respect barrier gestures
- Observe the markings on the ground
- Be sure to respect the direction of entry and exit of the swimming pools
- The use of the hairdryer is permitted
- Access to the sauna and hammam are authorized
- Access is prohibited for people with respiratory and digestive signs
- Pool decks are disinfected regularly
- No access to changing rooms and lockers

### PLAYGROUND / MULTISPORTS FIELD PROTOCOL

- Scrupulously respect barrier gestures
- Authorized grouping of 10 people maximum
- Respect the social distancing of 2 m
- Wearing a mask is strongly recommended
- Hand washing before entering and leaving

### BAR / BRASSERIE / SNACK PROTOCOL

- Mask must be worn in the queue
- Mandatory hand washing before entering the queue
- Scrupulously respect barrier gestures
- Observe the markings on the ground
- Be sure to respect the direction of entry and exit
- Our tables and chairs are disinfected at each change of customer
- Contactless payment is preferred

## GROCERY STORE PROTOCOL

- Wearing a mask is compulsory in the grocery store
- Mandatory hand washing before entering the grocery store
- Scrupulously respect barrier gestures
- Observe the markings on the ground
- Be sure to respect the direction of entry and exit
- Contactless payment is preferred

## ARRIVALS PROTOCOL

- At the time indicated by the campsite: go to the campsite entrance without getting out of your vehicle
- Show your voucher to the receptionist
- The receptionist will give you a welcome pack where you will find: accommodation keys, badges for the albères and the brillas campsite, welcome booklets, summary of barrier actions, map of the campsite, swimming pool bracelets and bracelets connected for camping the ocean and the beautiful air.
- Head directly to your location
- All our keys (badges and connected bracelets) are disinfected on each arrival and departure of each customer

## DEPARTURE PROTOCOL

- At the time indicated by the campsite: leave the site.
- Bare site: clean site without waste
- Accommodation: open windows and doors
- If you wish to report a broken object, obtain an invoice or any other information related to departure, please send an email via the Cybèle vacances application
- Return your keys and / or badge and / or connected bracelets on time (before 10 a.m.) in the box in front of the reception

## PROTOCOL DURING THE STAY

- Before your arrival, your accommodation has been cleaned and disinfected following a very strict sanitary protocol. The mobile home has been completely disinfected.
- When you arrive in your accommodation: Open the windows and doors of the mobile home to ventilate for 30 minutes

We now invite you to think "RELAXATION and HOLIDAYS".

A technical problem: do not hesitate to contact reception by email, phone or via the Cybèle vacances application

# ANNEXE 1

## INFORMATION CORONAVIRUS

COVID-19

### PROTÉGEONS-NOUS LES UNS LES AUTRES



Se laver régulièrement les mains  
ou utiliser une solution hydro-  
alcoolique



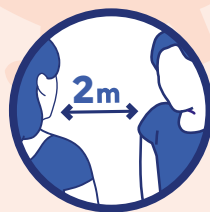
Tousser ou éternuer dans son  
coude ou dans un mouchoir



Se moucher dans un mouchoir  
à usage unique



Portez un masque chirurgical ou  
en tissu de catégorie 1 quand  
la distance de deux mètres ne  
peut pas être respectée



Respecter une distance  
d'au moins deux mètres avec les  
autres



Limiter au maximum ses  
contacts sociaux (6 maximum)



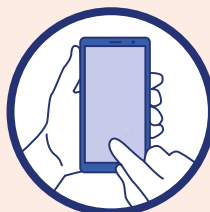
Éviter de se toucher le visage



Aérer les pièces le plus souvent  
possible, au minimum quelques  
minutes toutes les heures



Saluer sans serrer la main  
et arrêter les embrassades



Utiliser les outils numériques (TousAntiCovid)



[GOUVERNEMENT.FR/INFO-CORONAVIRUS](https://www.gouvernement.fr/info-coronavirus)



**0 800 130 000**  
(appel gratuit)

# ANNEXE 2

COVID-19

## BIEN UTILISER SON MASQUE

### Comment mettre son masque



1 Bien se laver  
les mains



2 Mettre les élastiques  
derrière  
les oreilles

OU



Nouer les lacets  
derrière  
la tête et le cou



3 Pincer le bord rigide  
au niveau du nez,  
s'il y en a un, et abaisser  
le masque en dessous  
du menton

### Comment retirer son masque



1 Se laver les mains  
et enlever le masque  
en ne touchant  
que les lacets  
ou les élastiques



2 Après utilisation,  
le mettre dans un sac  
plastique et le jeter

OU



s'il est en tissu,  
le laver à 60°  
pendant 30 min



3 Bien se laver  
les mains  
à nouveau

**Le masque est un moyen de protection complémentaire  
qui ne remplace pas les gestes barrières**

W0915-001-2003 - 30 avril 2020



[GOUVERNEMENT.FR/INFO-CORONAVIRUS](https://www.gouvernement.fr/info-coronavirus)



**0 800 130 000**  
(appel gratuit)